


Every Neighbor Caring for Our River

Unique Partnerships, Unique Perspectives, Connecting a Community to Its River



- Who is Inland Empire Waterkeeper?
 - Why the need for ENCOR: Every Neighbor Caring for Our River
 - Our project and partnership with National Parks Service
 - How can your organization benefit from this program?
- 

Who We Are



Inland Empire Waterkeeper is a grassroots, non-profit water quality organization. Our mission is to enhance and protect the quality of the waterways within the Upper Santa Ana River Watershed through five program tenets: **Advocacy, Education, Research, Restoration, and Enforcement**. We are a licensed member of the international Waterkeeper Alliance.

Inland Empire Waterkeeper's vision is to use a regional, collaborative approach to achieve a sustainable watershed free of pollution and a community of motivated water stewards.



ENCOR: Every Neighbor Caring for Our River

The Rivers, Trails, and Conservation Assistance Program offers technical assistance grants and is part of a suite community assistance program offered by the National Park Service.

They work with nonprofits, community groups, tribes, local, state or federal govt agencies.

They have an application process, downloadable at - www.nps.gov/rtca - deadline June 30th, 2016

They provide assistance for community led natural resource conservation and outdoor recreation projects

RTCA assistance generally consists of :

- Partnership development

- Public outreach

- Meeting process and facilitation

- Organizational development

- Capacity building



Partnership Building



Pomona
College



INLAND EMPIRE WATERKEEPER.
Advocacy • Education • Research • Restoration • Enforcement

What's in a Name?

Our NPS advisor, MaLisa Martin, trained the partners in facilitating skills such as group brainstorming techniques. This was used to come up with a name for our project that would reflect the history and the future of recreation in the middle Santa Ana River. This is another example of how this grant has left us with tools to be more effective and grow our capacity.

ENCOR: Every Neighbor Caring for Our River, was chosen to honor the work of those who came before us, as well as the community that will take over after we have finished.



SANTA ANA RIVER

Every
Neighbor
Caring for Our
River



CITY OF RIVERSIDE
Public Recreation • Community Services Dept

Welcomes You

While enjoying these park facilities please keep in mind the following:

CITY MUNICIPAL CODE PROHIBITS

- ALCOHOLIC BEVERAGES • DOGS OFF LEASH
- GAMBLING • WEAPONS • SMOKING
- SKATEBOARDING, ROLLERBLADES & SCOOTERS
- CAMPING • SOLICITING • FIREWORKS
- HORSES • GOLFING • CUTTING OF PLANTS

Thank You

PARK HOURS: 7:00 AM BEFORE SUNRISE
UNTIL 30 MINUTES AFTER SUNSET

LOT 4


COYOTES
MAY BE FOUND IN THIS AREA
GIVE THEM DISTANCE AND RESPECT


DANGER!
PELIGRO!
UNSAFE WATER
STAY OUT OF THE WATER
AGUA PELIGROSA
¡¡¡¡¡¡¡¡ FUERA DEL AGUA
RIVERSIDE COUNTY REGIONAL PARK & OPEN SPACE DISTRICT

SANTA ANA RIVER TRAIL

CARLSON PARK

MARLEA MCLEAN

HIDDEN VALLEY

S WATERMAN AV.

ANTAZA NARROWS WILDLIFE AREA



Santa Ana Sucker



Least Bell's Vireo

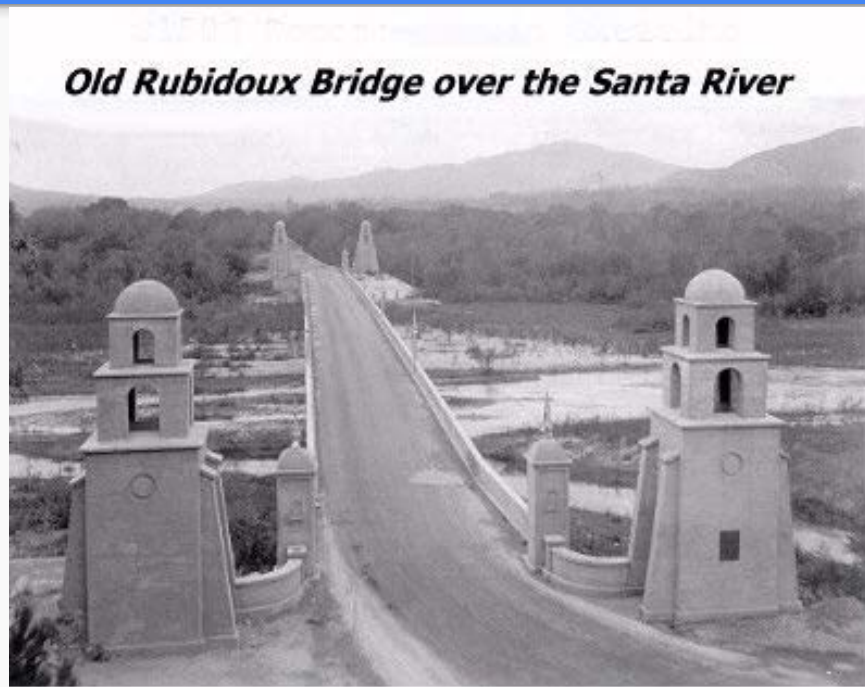
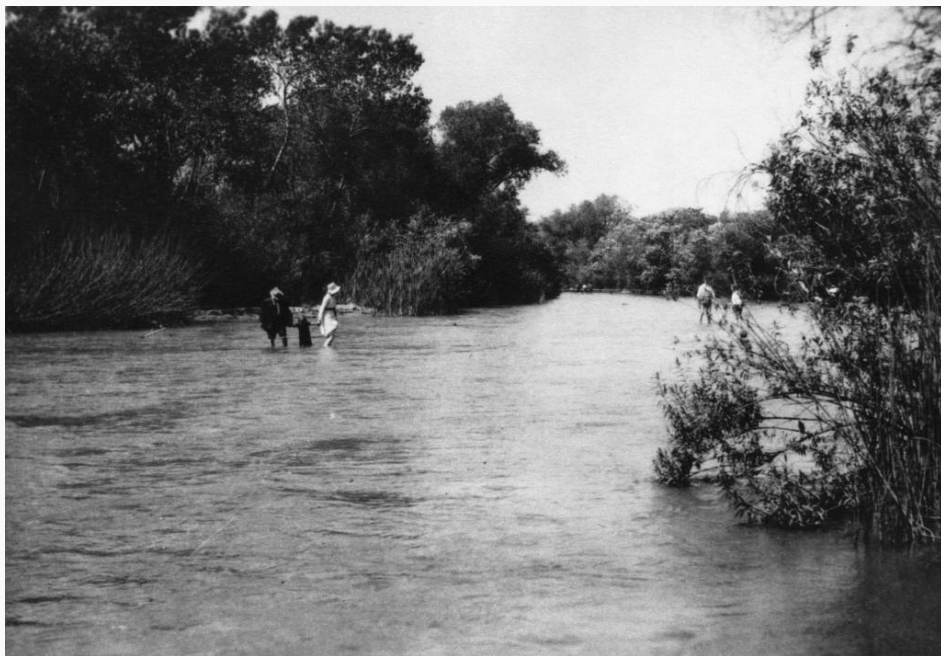


Water Quality and ENCOR

As a Waterkeeper organization, we approach every project through the lens of water quality. As such, at the start of this project we employed a Stream Team of scientists to take weekly water samples at four locations in the Santa Ana River within the project area. The team tested for all water quality markers including bacterial



A Growing Document



Site Assessment Form: Santa Ana River

2.2 Spilly

Site Name: Torro + Business Park

Property Owner: Torro + Business

Land Manager: ?

Location: Industrial Ave + Jasmine St

Zoning: Indus

Hours of Operation: ?

Potential for Street Access: Good

Adjacent Property Description: Indust.

- AMENITIES**
- ADA Accessible
 - Drinking fountain
 - Garbage Cans
 - Picnic Tables
 - Fees or Permit
 - Bathrooms - permanent
 - or Portable
 - Parking: Street
 - Large Lot (>10 spaces)
 - Small (< 10 spaces)
 - Shoulder of road
 - Gates
 - Camping
 - Signage: Vehicle
 - Other: _____

- PUBLIC SAFETY**
- Presence of Graffiti
 - Litter and trash: moderate
 - Signs of Homeless Encampments
 - Strong Odors
 - Other: fires dumped
- Trail Conditions:
- Distance from parking to River: 1/2 mile
- Slope of Trail: 1 - Gentle
- 2 - Moderate
- 3 - Difficult

ISSUES AND POTENTIAL HAZARDS

Homeless encampments, steep trail access on private land

CULTURAL AND/OR ECOLOGICAL ISSUES



Site Assessments



Site Assessment: Reach Aqua Mansa Commerce Center

Property owner	Ken Andersen
Land manager	not currently managed
Location	Main St and Riverside Ave
Zoning	Commercial
Hours of operation	NA
Potential for street access	Yes there is potential for street parking
Adjacent property	Industrial and undeveloped land, on the border with Colton

Public Safety

Presence of graffiti	Homeless encampments	X	Other:
Litter and trash	X Strong odor		

Trail Conditions

Distance - parking to river:	1/4 mile
Slope of trail:	

Amenities

ADA Accessible	Permanent bathrooms	Gates
Drinking fountain	Portable bathrooms	Camping
Garbage cans	Large parking (>10 spaces)	Signage
Picnic tables	Small parking (< 10 spaces)	Other:
Fees or permit	Road shoulder parking	

Activities at Site (Potential)

Hiking	X	Bicycling	X	Swimming	X
Birding	X	Rafting		Fishing	
Horseback riding	X	Paddleboarding		Other:	Family Picnicing

Existing signage

Interpretation	
Regulatory	Yes
Wayfinding	
Safety	

Issues & Potential Hazards

There is a lot of rebar and construction materials on the bank of the river

Cultural and/or Ecological Issues

Very rich wildlife - lots of tracks skunk, coyote, rabbit, opossum, bob cat. Saw hawks and a coyote

Other Notes

Property would be great for a nature education center. Plenty of space and upland and River trail

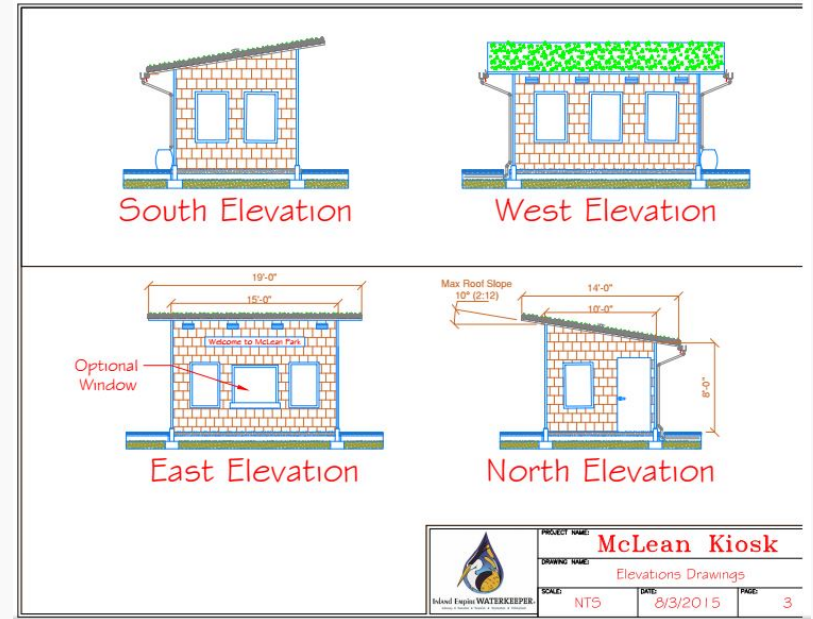


Site Assessments



NPS Expertise in Action

NPS was able to gift us with the service of landscape architects to join us on field days and give advice as well as render conceptual drawings for specific sites. Again, increasing our capacity for comprehensive planning of this project.





A look at other rivers and projects





Rivercamp is born!



Rivercamp



Nature: the great equalizer

Rivercamp





Community Cleanups



River KATS: Kid Activism Through Science





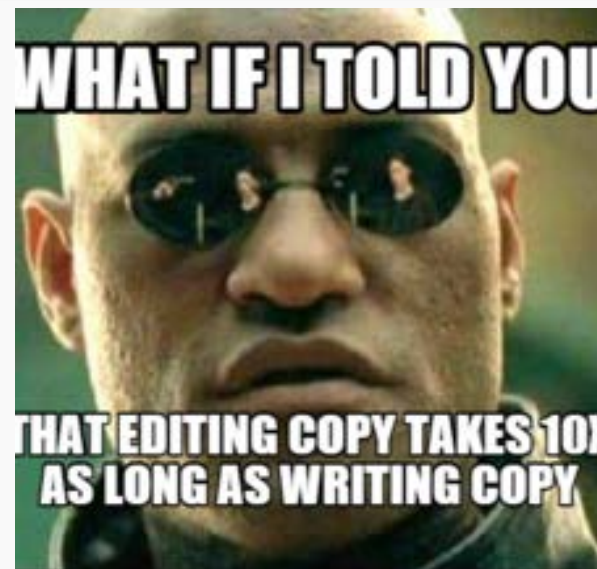
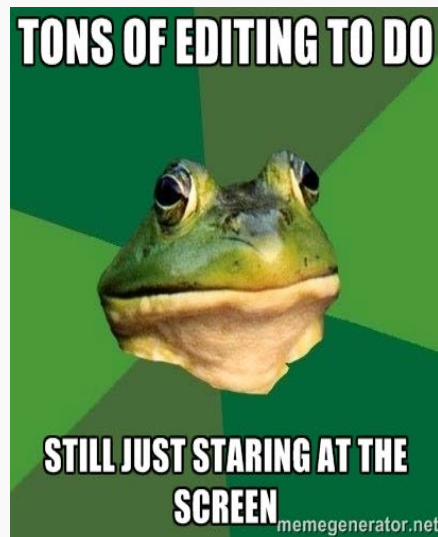
A Community's Needs Addressed





Putting It All Together

Editing of such a large and content heavy document requires the help of both the NPS and IEWK staff and proves to be a big task!





The Next Steps

We aim to have our ENCOR plan adopted by the governing bodies over the Santa Ana River and hope that it will serve as the groundwork for a revitalized and vibrant river that is used and celebrated by its community.





Can the NPS Assistance Grant help you?

Check out the NPS Rivers, Trails, and Conservation Assistance program application process, downloadable at - www.nps.gov/rtca - deadline June 30th, 2016